



The Elara11 Pre/Post - Vacuum Class B Sterilizer

It's back and better than ever!

With over 90 years of expertise in sterilization and infection control, Tuttnauer has always provided reliable and advanced technology. The new Elara 11 autoclave with its 11" chamber continues this tradition by providing an ideal sterilization solution for any dental, outpatient or private clinic where pre & post vacuum sterilization is required.

Designed to meet the most current sterilization standards ANSI/AAMI ST55



Innovative EZView multi-color display

A bright, new LCD panel uses active multi-color display technology for easy reading, even from a distance

EZPad

Consists of 3 keys, allowing the user to browse with ease through the sterilization programs and user directories

Printer

Equipped with a conveniently located printer which documents detailed history of each cycle

USB Port (located under printer door cover)

Store and transfer approximately 100 cycles of data

Innovative multi-color display

Real time information is easy to read, even from a distance.

Indicates program icon and name, cycle parameters, temperature and pressure in the chamber.

During the selected program each stage of the sterilization cycle is displayed with both an active color wheel and text.

- The color wheel and text change for each phase of the cycle
- Wheel rotates to indicate activity through each part of the cycle
- Remaining time displayed during Water Filling, Sterilization, and Drying phases

Multiple languages





The Elara11 tabletop autoclave is a reliable and robust Class B sterilizer designed for the needs of Dental clinics, Medical clinics and Veterinary clinics where autoclaving requires pre vacuum sterilization.

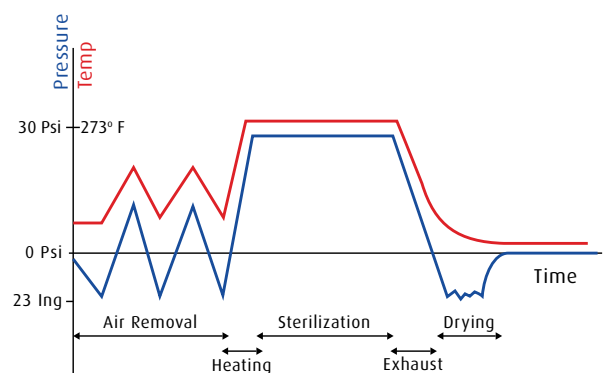
Class B performance is achieved with a built-in vacuum pump used for fractionated pre vacuum air removal eliminating air pockets from all load types and maximizing efficient steam penetration throughout the entire load. After the sterilization stage the vacuum pump is used for efficient post-vacuum drying.

Safety is Our Top Priority

Safety Features:

- 316L grade stainless steel chamber and door with electro-polish finish
- A cycle will not start unless the door is properly locked
- Automated double locking safety device prevents door from opening while chamber is pressurized
- Automatic safety shutoff prevents overheating of chamber and load
- Two independent clean water level indicators: A digital alert and a visual indicator
- A water level alert indicates when waste water reservoir should be emptied
- Visual indicator and audible alert indicates if cycle is not properly completed





Elara11 - Sterilization Program, Wrapped Instruments 273



Class B Sterilization Cycles

Pre-vacuum phase efficiently removes air, resulting in the full penetration of steam into wrapped, porous and hollow loads. The post-vacuum drying phase ensures complete drying of wrapped porous loads and hollow instruments. This guarantees that even the most difficult loads will easily reach Sterility Assurance Level (SAL).

The Elara11 offers 4 FDA cleared sterilization programs and 2 test programs, which are the Vacuum Test and the Bowie Dick Test.

Sterilization & Test Programs		Temp.	Sterilization Time	Dry Time
Description	Icon			
Unwrapped Instruments		273° F	4 Minutes	1 Minute
Wrapped Instruments		273° F	4 Minutes	20 Minutes
Unwrapped Delicate Instruments		250° F	20 Minutes	1 Minute
Wrapped Delicate Instruments		250° F	20 Minutes	20 Minutes
Vacuum Test	N/A	pre-set		
Bowie & Dick	N/A	273° F	3.5 Minutes	2 Minutes



Loaded vertically with 4 full and 4 half cassettes (cassette rack included)



Loaded with 5 stainless steel trays

Pre/Post—Vacuum Class B Sterilizer

Clean & Waste Water Reservoirs

Reduces cleaning and maintenance on the machine and provides clean steam for every cycle



EZFill front water filling

Accessible front or top water filling options

Waste reservoir continuous drain (rear located)

Eliminate the need to manually drain the waste reservoir

EZView multi-color display

For easy reading, even from a distance

Network port (rear located)

For connection to a local network to provide remote monitoring of the system

Comprehensive warranty

1 year parts and labor, 10 year chamber

EZGlide self locking door

Newly designed, ergonomically friendly EZGlide door features effortless opening and closing with an automatic double safety locking mechanism. Glide the door closed with a gentle push to close and lock it.

Closed door drying and pre-vacuum air removal

A high volume vacuum pump provides optimum sterilization results and efficient closed door drying. Keeping the door closed throughout the dry cycle maintains sterility and ensures efficient drying. The High-Volume, vacuum pump is very effective at removing moisture from instruments.

Designed for continuous Operation

Steam is continuously provided by an independent steam generator. With the Elara 11, there is no waiting time between cycles



Technical Specifications

Model	Chamber Dimensions OxL in (mm)	Volume	Overall Dimensions* DxWxH in (mm)	Standard cassette capacity**	Tray Dimensions DxWxH in (mm)	No. of Trays	Voltage*** (V) Freq. (Hz)	Power (W) Current (A)	Shipping Weight lbs (kg)
Elara11	11"x19.8" (280x504)	7.5 gal. 28.5L	26"x20.9"x17.3" (660x530x440)	4 Full & 4 Half** (loaded vertically)	16.3"x6.7"x0.6" (442x173x19)	5	230V 50/60	2300W 10A	171 (78)

* Minimum tabletop depth of 24"

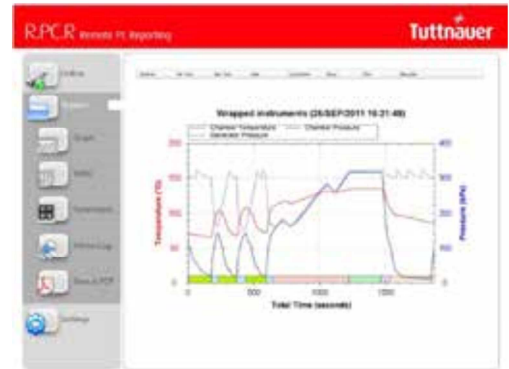
** Standard full size cassette is 8"x11" and standard half size cassette is 8"x5.5"

*** Requires a voltage between 220V and 235V for proper operation. Voltage outside this area will require a buck/boost transformer (0.5KVA).

R.P.C.R Software (Optional)

(Remote PC Reporting Software)

- Remote monitoring of multiple autoclaves from any PC on your local network in real time
- Automatic downloading of cycle history to your PC
- Built in memory capable of storing approximately 100 cycles of data
- Easy management of each machines cycle history
- Analysis of any cycle process using easy to understand graphs or table data
- Generate PDFs from cycle analysis that can easily be printed for future reference
- R.P.C.R can also analyze and store cycle history downloaded with a USB drive



Standards and Directives

The Elara11 meets established International standards and specifications:

USA Standards: ANSI/ AAMI ST55, ASME Sec. VIII, UL 61010A-1, UL 61010A-2-041, FDA 510(K)

Cleared, ISO 17665-1. The Quality System complies with ISO 13485:2003 and ISO 9001:2008

Canada Standards: CRN, CSA

EU Standards: EN 13060:2004, EN 13445, EN 61010-1, EN 61010-2-041, EN 61010-2-040,

EN 554 EN 61326 EN 61326. Complying with MDD 93/42, PED 97/23, RoHS & WEEE Directives



The Elara11 Pre/Post - Vacuum Class B Sterilizer

Tuttnauer USA Co., Ltd.
25 Power Drive
Hauppauge, NY 11788
Tel: +800 624 5836, +631 737 4850 Fax: +631 737 0720
E-mail: info@tuttnauerUSA.com, www.tuttnauerUSA.com

Tuttnauer Europe b.v.
Hoeksteen 11, 4815 PR
P.O.B. 7191, 4800 GD Breda
The Netherlands
Tel: +31 (0) 765 423 510 Fax: +31 (0) 765 423 540
E-mail: info@tuttnauer.nl



TuttnauerTM
Your Sterilization & Infection Control Partners

Distributed by:

Booth Medical Equipment

www.boothmed.com

(888) 729-2332